

Instruction Manual

Power head 400, 600, 1000, 1500



Introduction

Thank you for choosing a JUWEL Aquarium product.

Our products represent over 30 years experience in the manufacturing of aquariums and their accessories applying most modern production techniques bringing together the JUWEL Aquarium system, which is both easy to use and simple to maintain.

Always unplug all immersed electrical equipment from mains before placing your hands into the water.

Installation of the JUWEL Aquarium Power Head inside the Filter System

The JUWEL Aquarium power head you purchased is the newest design featuring a higher flow rate appropriate for the relevant JUWEL Aquarium Filter System operating at the lowest noise level possible.

The newly developed pump adapter positioning the power head accurately inside the filter system has been designed to reduce the noise level even further, also providing the possibility to add an air-venturi kit available from your retailer.

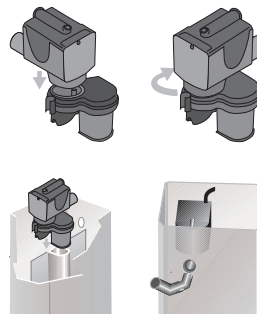
The new JUWEL Aquarium power head system consists of 4 pieces:

1. Motor
2. Impeller
3. Removable power head cover
4. Power Head Adapter

Prior to the installation of the new power head, please ensure that the impeller is in position and that the power head cover is firmly attached to the motor unit.

In order to install the power head, please follow the following Steps:

1. Disconnect the heater and the power head from the power supply.
 2. Allow the heater to cool for approx. 30 Minutes and remove it from the filter.
 3. Remove the water outlet nozzles from the power head and remove the old power head together with the rubber socket from the filter.
 4. Position the new power head on the adapter and turn the adapter to the position in which it fastens securely to the adapter.
 5. Push power head and adapter firmly onto the position on the separation wall and ensure that the outlet nozzle of the power head is position exactly opposite the hole in the filter housing.
 6. Connect the new water outlet nozzles from outside of the filter through the filter housing with the power head.
 7. Reposition the heater into the filter system.
- The power head is now ready for use and can be connected to the power supply.



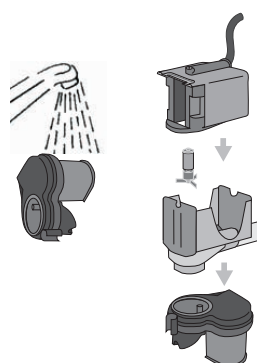
Care and Maintenance

The JUWEL Aquarium Power head requires very little maintenance but we recommend that you check it regularly to ensure optimum performance.

In order to maintain the power head, please follow the following steps:

1. Disconnect the heater and the power head from the power supply and allow the heater to cool for approx. 30 minutes.
2. Remove the heater and place it on a non-flammable, safe surface.
3. Remove the nozzles from the power head.
4. Remove power head and adapter from the filter system.
5. Turn the adapter to the right to free it from the power head. Check that the rubber seals do not show any sign of wear and tear. In case of doubt we recommend to replace the adapter to ensure continuing optimum performance.
6. Remove the power head adapter from the motor and remove the impeller.
7. Clean and check all parts, in particular the impeller for wear and tear especially the magnet.

Thereafter please reassemble the power head and reposition it back into the filter.



Recommendation:

With exchange of the impellers 400, 600 and 1000 the flow rate can be varied.
In order to ensure that the power head operates at its optimum and maintains its low noise level, we recommend to check and potentially replace the parts subject to wear and tear, such as the impeller and the adapter.
All spare parts are available from your local JUWEL Aquarium retailer.

Safety instructions:

Never operate the power head out of water.
Always unplug the power head from the power supply before removing it from the filter.
The power head is intended for indoor use and for use in fluids up to 35°C.
Never repair the electrical cord or plug. In case of damage replace the complete power head.

Proper disposal (electrical waste)

The labelling on the product or on the accompanying literature declares that it must not be disposed of, at the end of its service life, with the ordinary household rubbish. Please dispose of this equipment separately from other waste, to protect the environment or public health from damage by unregulated waste disposal. Recycle the equipment and support the sustained recycling of material resources.
Private users should contact the dealer who sold them the product or the responsible authorities, for a demonstration on how to recycle the equipment in an environmentally friendly way.

Guarantee

We guarantee the performance of the JUWEL-Aquarium product or its accessories to the purchaser for a period of 24 months from the date of purchase according to the following conditions:

§ 1 Extent of the guarantee

(1) This guarantee extends to the JUWEL-Aquarium product and its components excluding items subject to wear and tear such as light tubes and filter media. It is limited to the product as such and does not cover damage to other property and/or individuals. In addition, the provisions of the product liability law apply. These provisions are not limited by the aforementioned arrangement.

(2) It is the prerogative of JUWEL-Aquarium to decide whether the guarantee is performed by means of repair or replacement. If neither repair nor replacement can ensure the performance of the JUWEL-Aquarium product the purchaser is entitled to demand a reduction in price or to return the product against repayment of the purchase price.

§ 2 Guarantee period and settlement procedure

(1) The guarantee period begins on the day of the purchase of the product from the retailer. Claims under this guarantee will not be honoured, if

- (a) the damage is caused as a result of improper use or maintenance or non-observance of the instructions given in this manual
- (b) the product or its components have been maintained by persons or companies not authorised by the manufacturer to do so
- (c) the product or its components have been damaged by mechanical means of whatsoever kind, in particular broken glass

(2) All claims under this guarantee have to be notified to the retailer, from whom the aquarium has been purchased without delay, however, not longer than 2 weeks from the day of first occurrence of defects. Rights under the consumer protection laws will remain unaffected.

(3) Guarantee claims will only be accepted if the validity of the claim is supported by evidence of purchase of the JUWEL-Aquarium product.

This declaration of guarantee is a translation only. In case of doubts the original German language version prevails.

We reserve the right to make technical alterations.